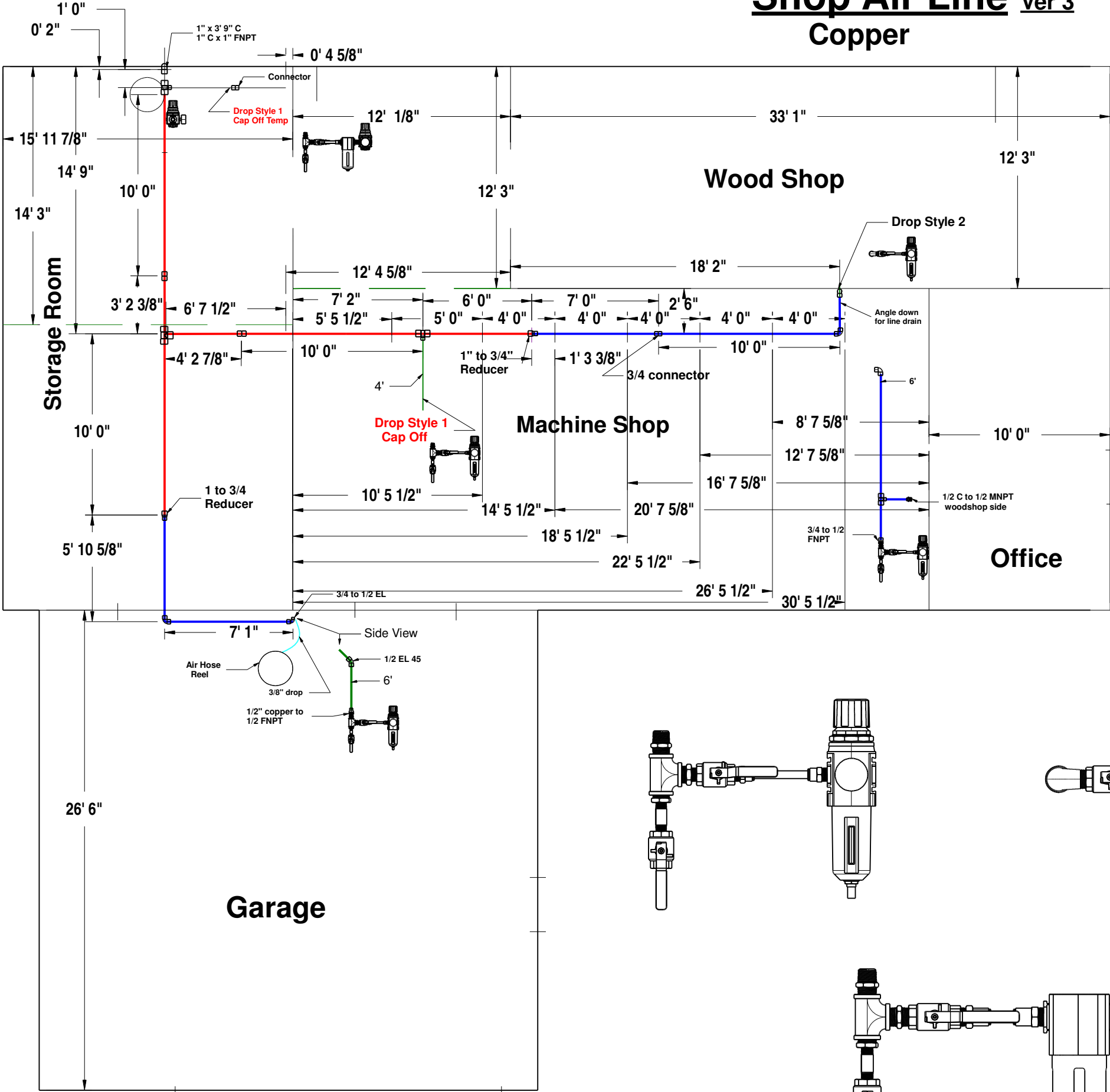
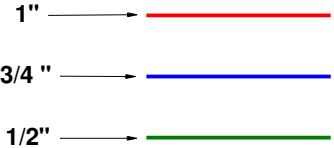


Shop Air Line Ver 3

Copper



- 3/4" Copper**
EL 90 3/4 to 1/2 - 1
EL 90 - 2
Connector 3/4" - 2
- 1" Copper**
EL 90 - 1
Connector 1" C x 1" FNPT - 1
Reducer 1 to 3/4 - 2
Tee - 1
Tee 1 x 1/2 x 1 - 3
Connector 1" to 1" - 2



Pipe Lengths

- 1" - 50' (Have 30')
3/4" - 46' 8" (Have 50')
1/2" - 32' (Have 10,8,5)

- Drop Style 2**
- Double Through Mill Wall**
- Mill Side:**
- EL 90 3/4 - 1
Tee C 3/4 x 1/2 x 3/4 - 1
3/4 c to 1/2 FNPT - 1
1/2" x 1/2 Brass Hex Nipple - 1
1/2" BP TEE - 1
1/2" x 3/8" Brass Hex Nipple - 1
3/8" Ball Shut Off - 1
1/2" x 1/4" Brass Bushing - 1
1/4" x 2" Nipple - 1
1/4" Ball Shut Off - 1
- Wood Shop Side**
- Reducer 1/2" C to 1/2 MNPT - 1
STL Brass 1/2" - 1
1/2" Ball Shut Off - 1

3 Drop Style 1

- Copper**
1/2" STL 90 - 3
1/2" EL 90 - 2
1/2" EL 45 - 1
1/2" Connector - 1
Reducer - 1/2 C to 1/2 FNPT - 3
- Black Pipe / Brass**
1/2" x 1/2 Brass Hex Nipple - 3
1/2" BP TEE - 3
1/2" x 3/8" Brass Hex Nipple - 2
3/8" Ball Shut Off - 2
1/2" x 1/2" Brass Hex Nipple - 1
1/2" Ball Shut Off - 1
1/2" x 1/4" Brass Bushing - 3
1/4" x 2" Nipple - 3
1/4" Ball Shut Off - 3

