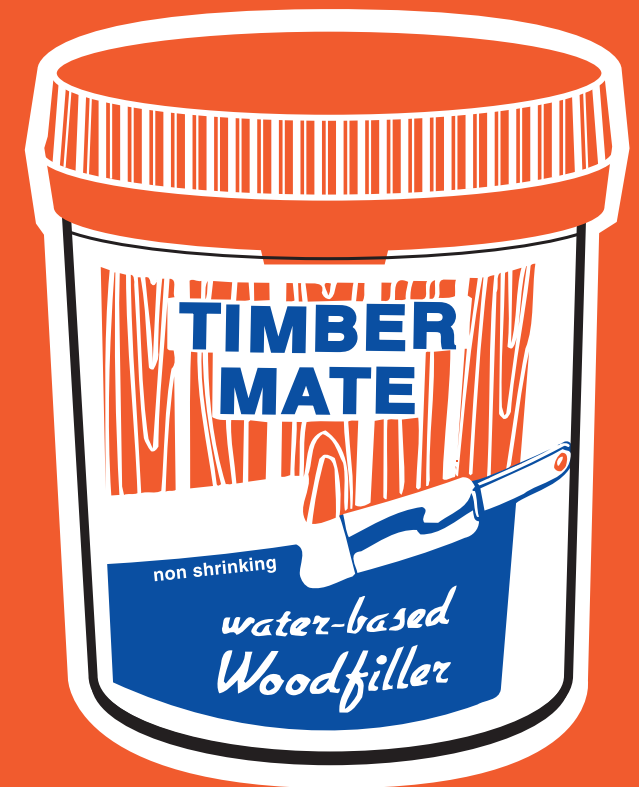


Timbermate USA, Inc.
Phone: (866) 563-MATE
Fax: (733) 262-0488
sales@timbermate.com
www.timbermate.com

- **#1 selling woodfiller in Australia**
- **Won't sink, shrink, crack or fall out**
- **Takes every stain & coating flawlessly**
- **Freeze & thaw stable**
- **No waste. Unlimited shelf life**
- **Mixes with any oil or waterbase stain**

Color	Size:			
	Qty. 24 (8oz)	Qty. (4lb)/6 1 Quart	Qty. (16lb)/ea. 1 Gallon	Qty. (40lb)/ea. 2.5 Gallons
Australian Cedar/ Spotted Gum/ S. Chestnut	AC25	AC2	AC8	AC20
Australian Cypress	AAC25	AAC2	AAC8	AAC20
Brazilian Cherry/ Jarrah	ABC25	ABC2	ABC8	ABC20
Brush Box	BB25	BB2	BB8	BB20
Cherry	AMC25	AMC2	AMC8	AMC20
Mahogany/ Sydney Blue Gum	AAM25	AAM2	AAM8	AAM20
Maple/Beech/Ash/ Pine	AMB25	AMB2	AMB8	AMB20
Natural/Tint Base	ATB25	ATB2	ATB8	ATB20
Red Oak	AR025	AR02	AR08	AR020
Rustic/Ebony	AE25	AR2	AR8	AR20
Tasmanian Oak/ Hardwood	TA025	TA02	TA08	TA020
Walnut	AW25	AW2	AW8	AW20
White	AWH25	AWH2	AWH8	AWH20
White Oak	AW025	AW02	AW08	AW020

***Please Follow
These Easy Directions
When Applying
Timbermate Woodfiller.***



Before Proceeding Please Note:

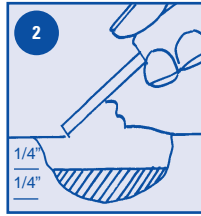
• **Timbermate will dry lighter and return to its original color once the final finish is applied.**

• **Timbermate can be mixed with any tint or stain to achieve a custom color.**

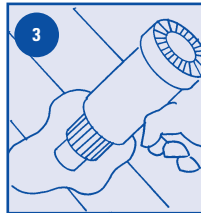


For Spot Patching

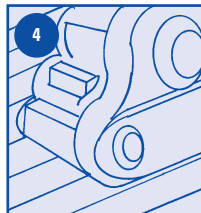
1. APPLY: If staining, use Timbermate Natural/Tint Base. Otherwise match the color to the wood. Using a plastic or high quality stainless steel putty knife, apply Timbermate to the floor directly out of the tub prior to the last sanding. (NOTE: If filler turns black, the putty knife is not high content stainless steel; however, the black will sand off.)



2. FILL: If hole is greater than 1/4", fill by layering Timbermate in 1/4" increments.



3. DRY: Let Timbermate dry thoroughly. Use a heat gun or similar to speed drying time if desirable. (Timbermate is properly dry if it sands to the consistency of baby powder.)

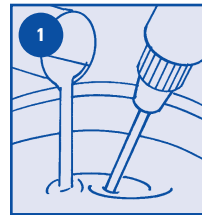
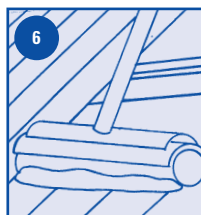


4. SAND: Final sand and remove all dust and debris.

5. STAIN: Apply stain to the floor (if staining). Do not rub the stain in with an aggressive action. Doing so will remove Timbermate.

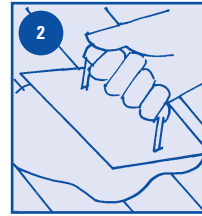


6. FINISH COAT: Apply any final finish coat.

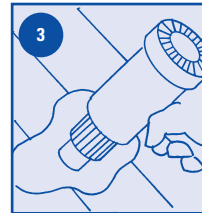


For Trowel Filling

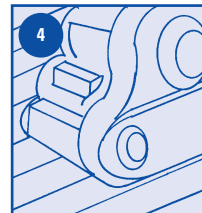
1. MIX: If staining, use Timbermate Natural/Tint Base. Otherwise match the color to the wood. Mix Timbermate in the tub with warm water (a mixer attached to a heavy duty drill is ideal). Slowly pour the water in as you mix – usually about 15% water by weight. Mix until Timbermate has the consistency of toothpaste.



2. APPLY: Apply Timbermate, just before the final sand, with a plastic trowel, or rubber float across the grain over the entire floor. Make sure the filler is forced into deep voids. Do not apply Timbermate too heavily – a small amount goes a long way. Remove all excess Timbermate. (Return excess to the Timbermate container-no waste.)



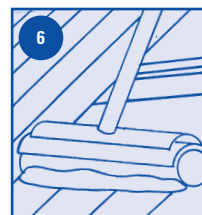
3. DRY: Let Timbermate dry thoroughly. Use a heat gun or similar to speed drying time if desirable. (Timbermate is properly dry if it sands to the consistency of baby powder.)



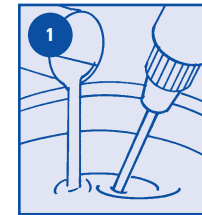
4. SAND: Final sand and remove all dust and debris. (If grain filling do not use a grit coarser than 120.)



5. STAIN: Apply stain to the floor (if staining). Do not rub the stain in with an aggressive action; doing so will remove Timbermate.

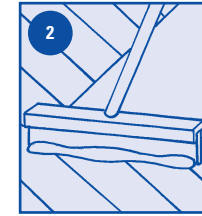


6. FINISH COAT: Apply any final finish coat.

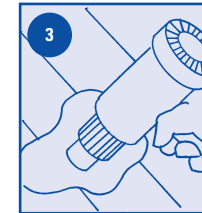


For Grain Filling (filled finish)

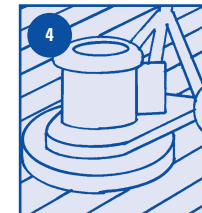
1. MIX: If staining, use Timbermate Natural/Tint Base. Otherwise match the color to the wood. Mix Timbermate in the tub with warm water (a mixer attached to a heavy duty drill is ideal). Slowly pour the water in as you mix – Timbermate should have the consistency of thick paint. Allow Timbermate mixture to dry to the consistency of toothpaste before sealing tub.



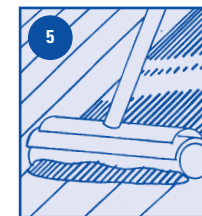
2. APPLY: Just before the final hard plate or screening, apply Timbermate by flooding the floor and squeegee it across the grain over the entire floor. Do not apply Timbermate too heavily – a small amount goes a long way. Remove all excess Timbermate (return excess to the Timbermate container-no waste).



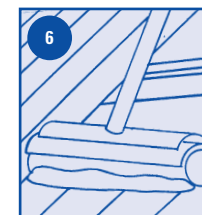
3. DRY: Let Timbermate dry thoroughly. Use a heat gun or similar to speed drying time if desirable. (Timbermate is properly dry if it sands to the consistency of baby powder.)



4. SAND: Final hard plate or screen and remove all dust and debris. (NOTE: Do not use a grit coarser than 120.)



5. STAIN: Apply stain to the floor (if staining). Do not rub the stain in with an aggressive action; doing so will remove Timbermate.



6. FINISH COAT: Apply any final finish coat.